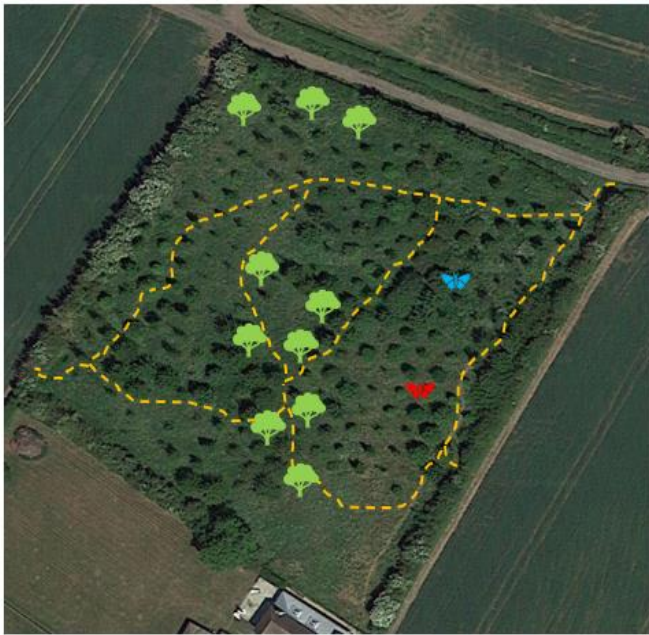


Stonepits Copse - Community Woodland and Nature Reserve

The paths have been cut – please enjoy this tranquil space, Can you find the 10 new trees planted as part of the Queens Jubilee Green Canopy project?

Biodiversity Project: Recording Sherington Wildlife. What species you can find and photograph in Sherington? (Please share your photos via sheringtonhs@yahoo.co.uk)



A project supported by Sherington Parish Council in line with Sherington Neighbourhood Plan Policy NP3 which includes the Objective - improve the quality of the environment at Stonepits Copse.

Sherington – Stonepits Copse: Access

- The footpaths have been cut so you can enjoy this Village amenity over the Summer.

Start from public footpath sign on the High Street
Opposite "The Small House"



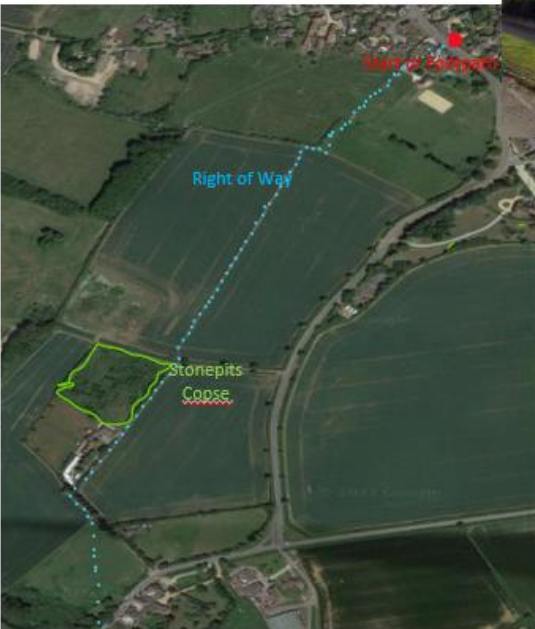
Right of Way



Keep to the Right of Way when passing through the fields
Please keep dogs on a lead (and clean up any dog poo)



A project supported by Sherington Parish Council in line with Sherington Neighbourhood Plan Policy NP3 which includes the Objective - improve the quality of the environment at Stonepits Copse.



Sherington – Stonepits Copse

- The footpaths have been cut so you can enjoy this Village amenity over the Summer.
- Look out for the **10 new trees** that were planted as part of the Queen's Green Canopy Project.
- Take time out to relax – you can sit and listen to the birdsong.



A project supported by Sherington Parish Council in line with Sherington Neighbourhood Plan Policy NP3 which includes the Objective - *improve the quality of the environment at Stonepits Copse.*